

Kromschroder, Solenoid Gas Valve, Serial Number	Instructions For Part Number: 501220
S15 Roasters With BCU Ignition Systems	

This document covers how to find the serial numbers used in Loring Roaster models equipped with a Kromschroder BCU (Burner Control unit). Please provide this information to Loring’s Customer Care Department.

In addition, the Customer Care Department would like photos of the valves fastening screws to determine their current condition.

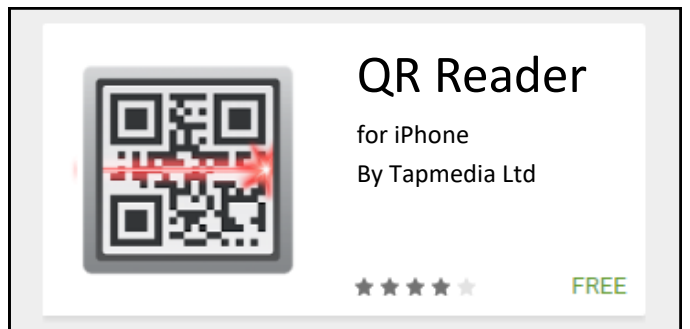
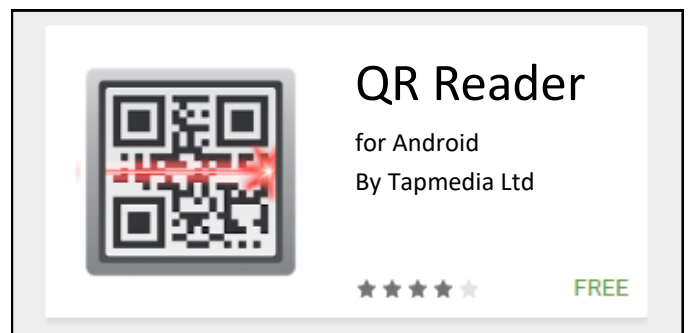
- Tools:
- 5/32” Allen Wrench
  - A Smart Phone

Time: Approximately 30 Minutes

- 1) Download the QR Reader app, by Tapmedia, onto a smartphone. This app is free, and is available for both Android and iPhone.

QR stands for Quick Response and is the trade mark for a type of matrix barcode, which contains information about the item to which it is attached.

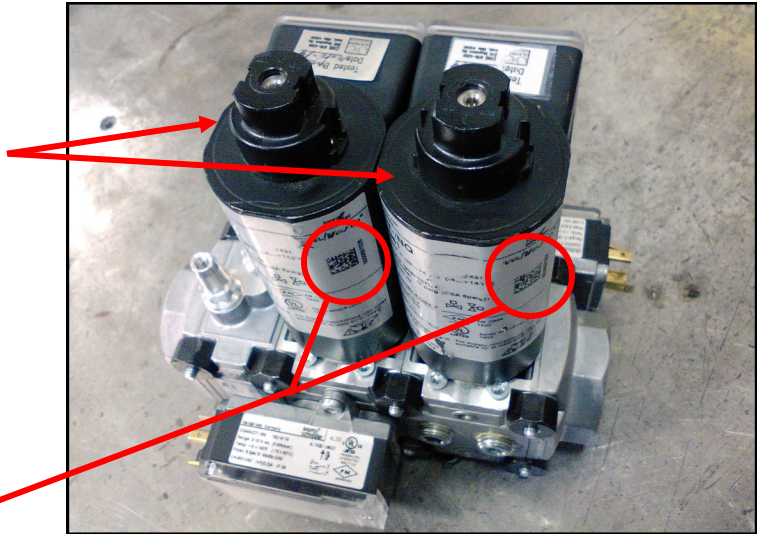
This is an example of the barcode that needs to be scanned. It is located on the underside of the solenoid that is a part of the Kromschroder gas valve assembly.



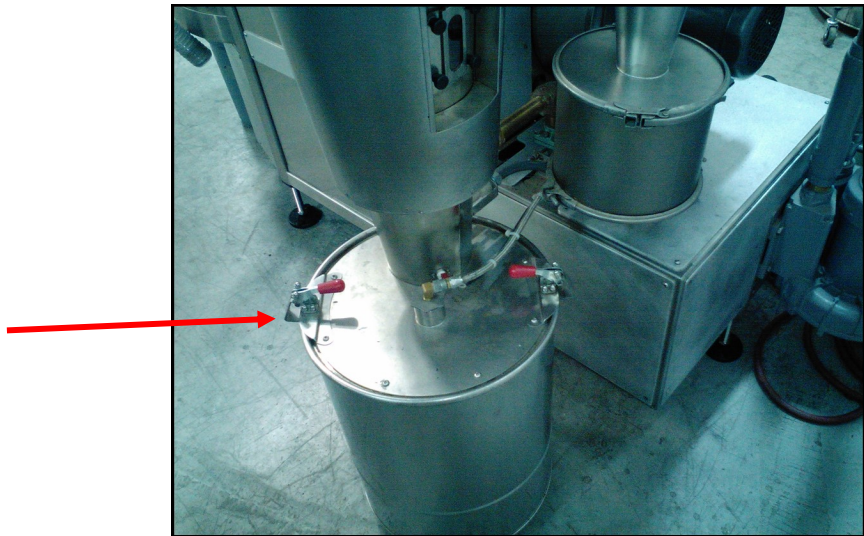
Kromschroder, Solenoid Gas Valve, Serial Number	Instructions For Part Number: 501220
S15 Roasters With BCU Ignition Systems	

This is an image of the underside of the valve assembly. The two long black cylinders are the gas valve solenoids.

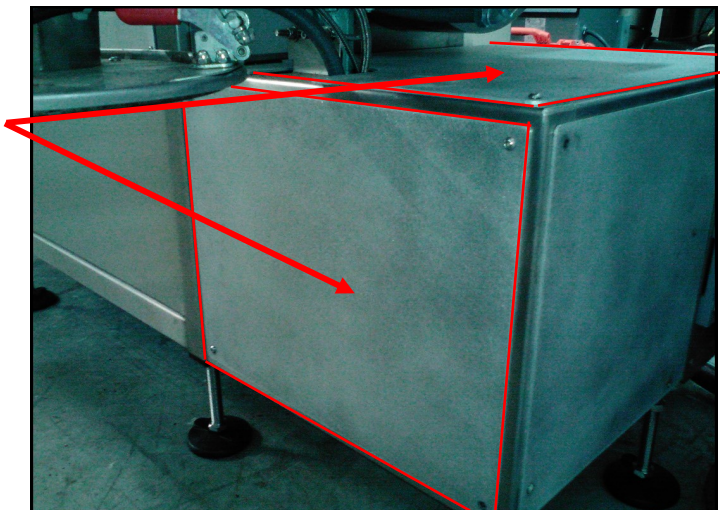
This is where the barcodes are located on the solenoids in the gas valve assembly.



2) Remove the chaff barrel.

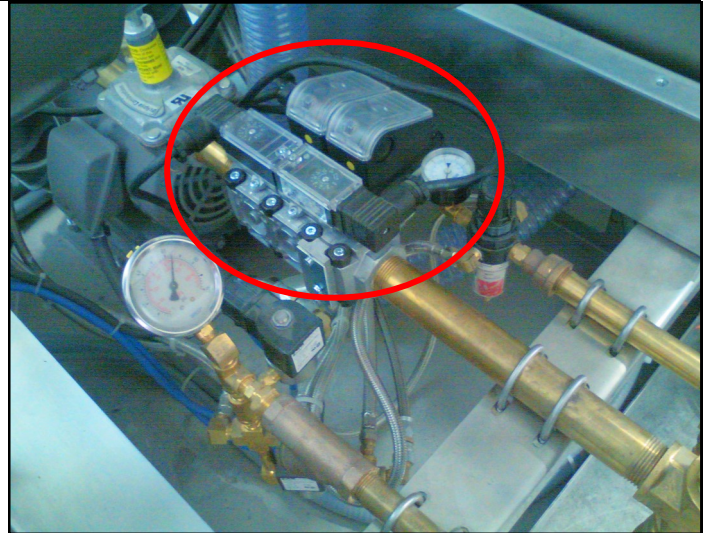


3) Using a 5/32" Allen wrench remove the screws that hold on the side, and top panels.

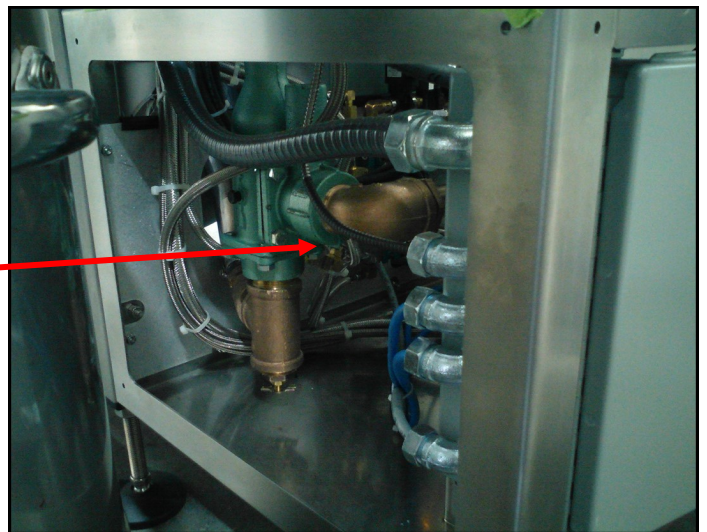


S15 Roasters With BCU Ignition Systems

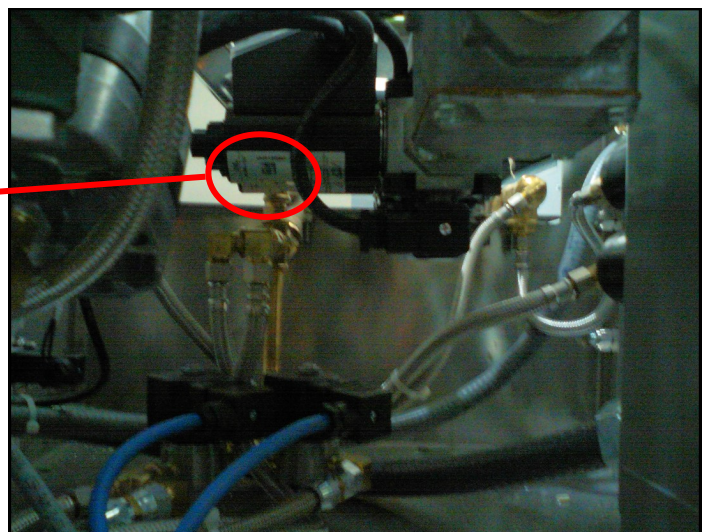
The Kromschroder valve assembly is located in the back utility tray. The bar codes will be found on the underside of this valve.



4) Access the utility tray from the side, and look for the Kromschroder valve solenoids.



On the valve solenoids, are two silver labels with the QR bar codes on them.



S15 Roasters With BCU Ignition Systems

5) Launch the QR Reader app.

6) Press the scan button icon.

7) If it is too dark inside the utility tray, turn on the light feature.

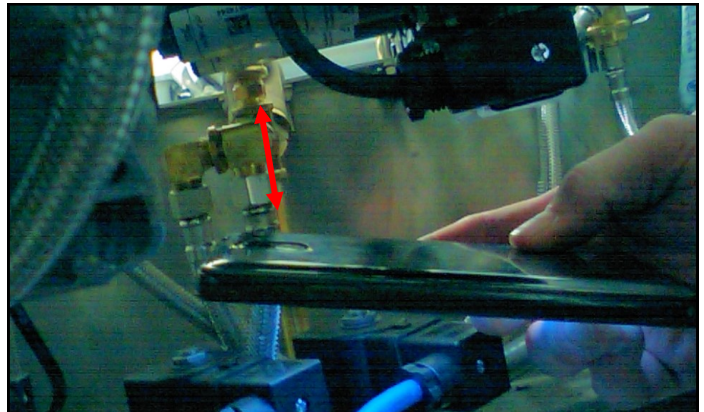
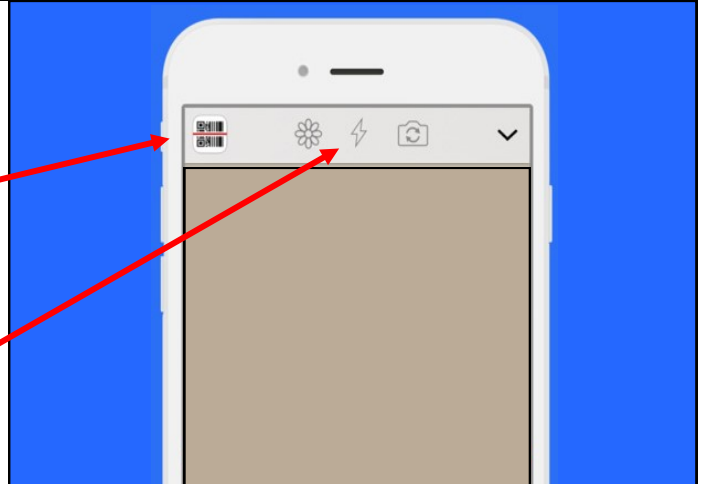
8) Place the phone's camera under the QR barcode.

Be patient. It may take a minute, or more, for the scanner to focus and read the bar code.

Each solenoid has a unique serial number.

**It is important to get the numbers  
from both solenoids.**

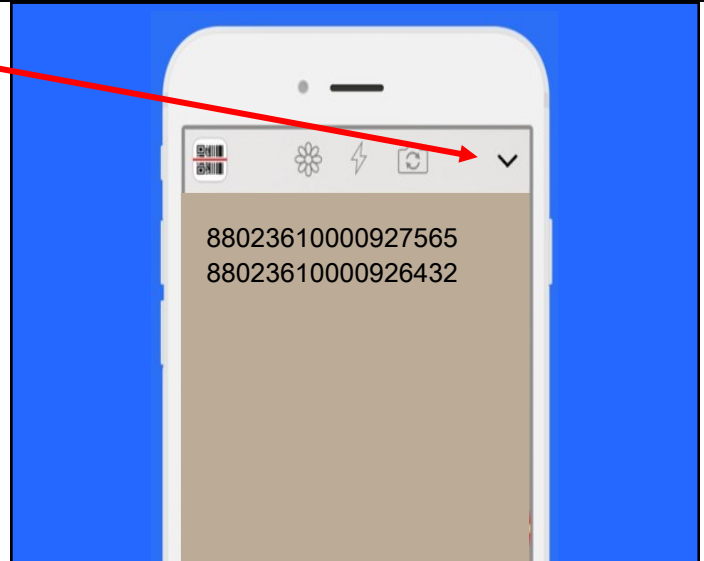
9) Center the bar code inside the scan box. The phone will give a short vibration when it has successfully read the barcode.



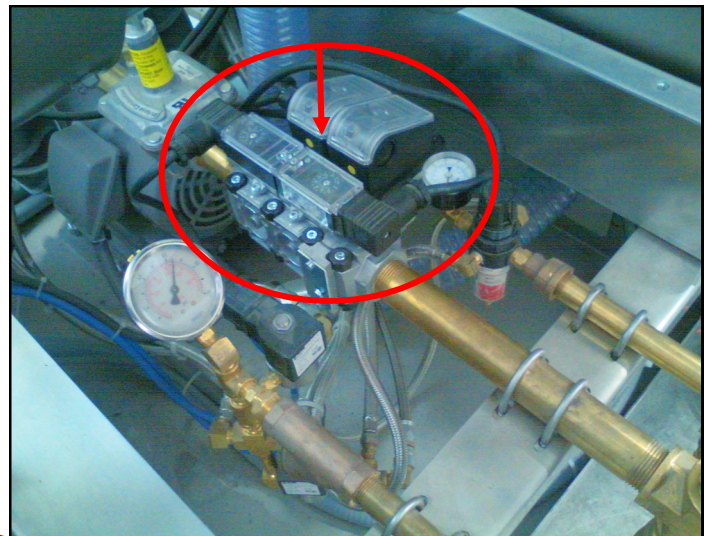
S15 Roasters With BCU Ignition Systems

10) Once the bar code has been scanned for each of the two solenoids, bring up history. Copy, and paste the numbers into an email, and send to Loring's Customer Care Department at the following address:

**Support@Loring.com**

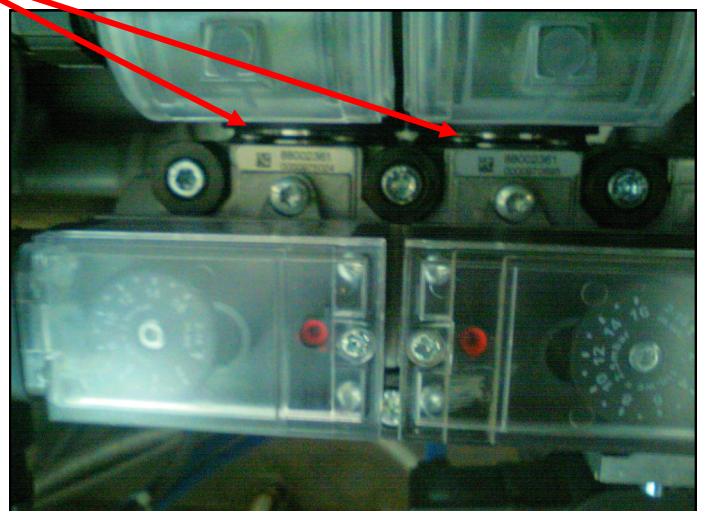


11) Inspect the screws of the valve assembly, to determine if they have become corroded, or if any of the screw heads have broken off.



12) Photograph the condition of the fastening screws that hold the solenoids in place as shown here, and send them to the same email address:

**Support@Loring.com**



Once our support team has received the requested data, we will let you know if any further action is required.